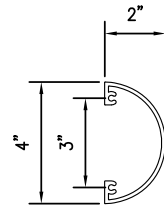
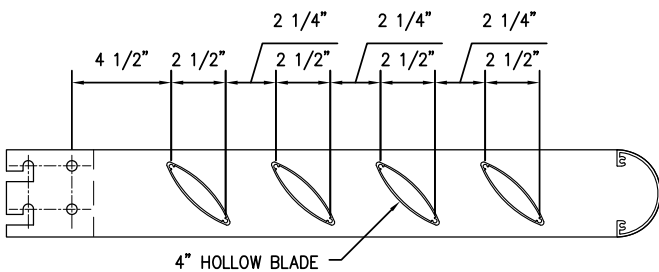


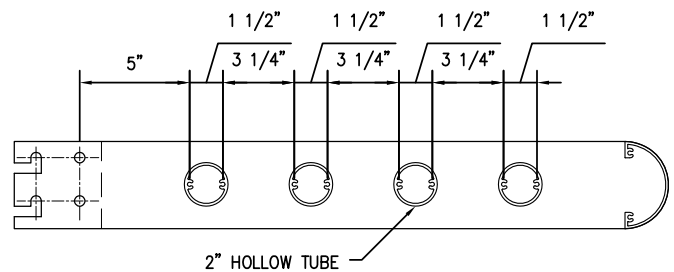
30" X 4" HALF ROUND OUTRIGGER
SCO20004-30



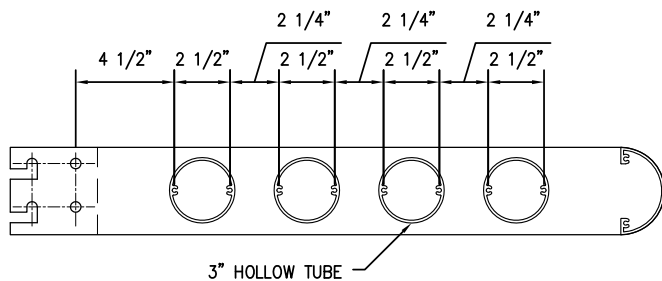
4" FASCIA - HALF ROUND
SCF20304



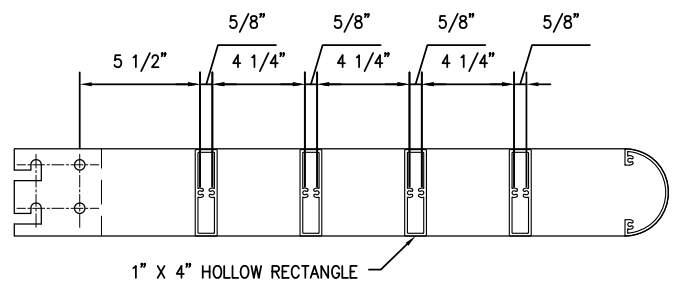
30" X 4" HALF ROUND OUTRIGGER WITH 4" HOLLOW BLADE INFILL
SCHA2514224-30



30" X 4" HALF ROUND OUTRIGGER WITH 2" HOLLOW TUBE INFILL
SCHA2202224-30



30" X 4" HALF ROUND OUTRIGGER WITH 3" HOLLOW TUBE INFILL
SCHA2203224-30



30" X 4" HALF ROUND OUTRIGGER WITH 1" X 4" HOLLOW RECTANGLE INFILL
SCHA2314224-30

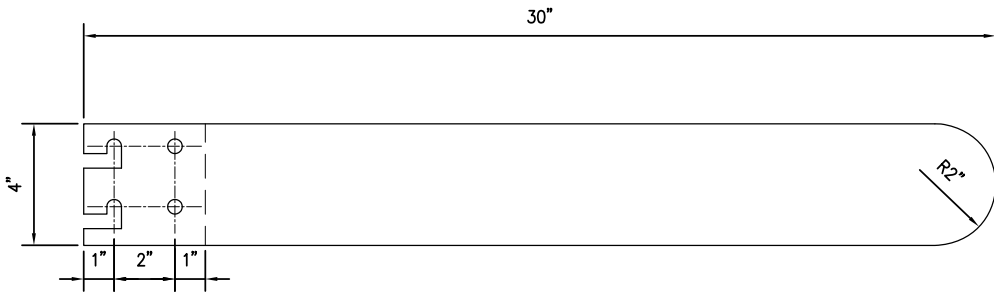
API recommends that this note appear with storefront elevations and section view details in your blueprints.

Storefront and related materials provided by American Products, Inc. (API). No substitutions without written consent from store owner/Architect. API (813) 925-0144

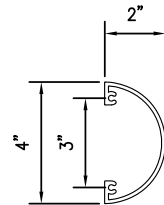
Customer: API	
Assembly: SUN CONTROL - 30" X 4" HALF ROUND	
Drawn By: GB	Date: 05/31/13
Revision:	Date:
Scale: N.T.S	Sheet: 1 OF 10



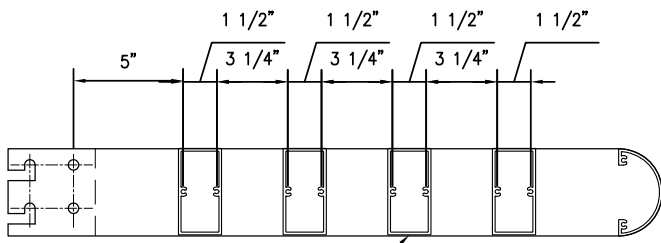
AMERICAN PRODUCTS, INC. (API)
12157 W. LINEBAUGH AVENUE #335
TAMPA, FL 33626
CONTACT: KERRI BEALS
PH (813) 925-0144
WWW.AMERICANPROD.COM



30" X 4" HALF ROUND OUTRIGGER
SCO20004-30

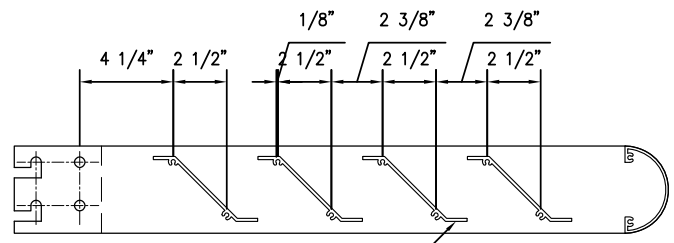


4" FASCIA - HALF ROUND
SCF20304



2" X 4" HOLLOW RECTANGLE

30" X 4" HALF ROUND OUTRIGGER WITH 2" X 4" HOLLOW RECTANGLE INFILL
SCHA2324224-30



3" Z-BLADE

30" X 4" HALF ROUND OUTRIGGER WITH 3" Z-BLADE INFILL
SCHA2653224-30

API Recommends that this note appear with storefront elevations and section view details in your blueprints.

Storefront and related materials provided by American Products, Inc. (API). No substitutions without written consent from store owner/Architect. API (813) 925-0144

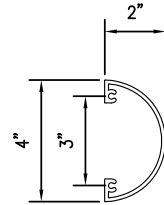
Customer: API	
Assembly: SUN CONTROL - 30" X 4" HALF ROUND	
Drawn By: GB	Date: 05/31/13
Revision:	Date:
Scale: N.T.S	Sheet: 2 OF 10



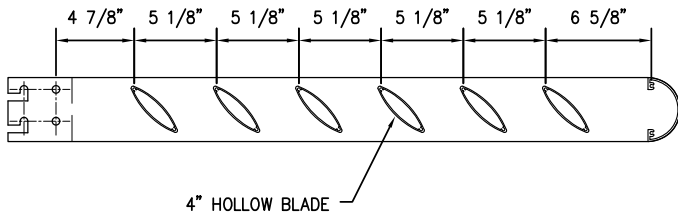
AMERICAN PRODUCTS, INC. (API)
12157 W. LINEBAUGH AVENUE #335
TAMPA, FL 33626
CONTACT: KERRI BEALS
PH (813) 925-0144
WWW.AMERICANPROD.COM



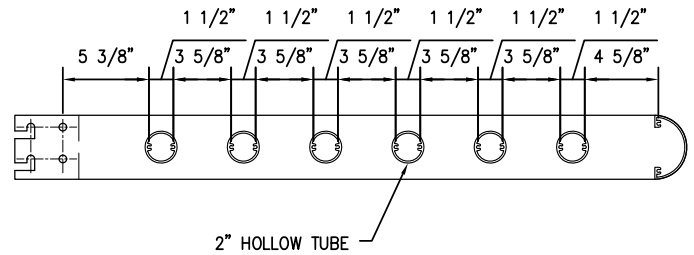
42" X 4" HALF ROUND OUTRIGGER
SCO20004-42



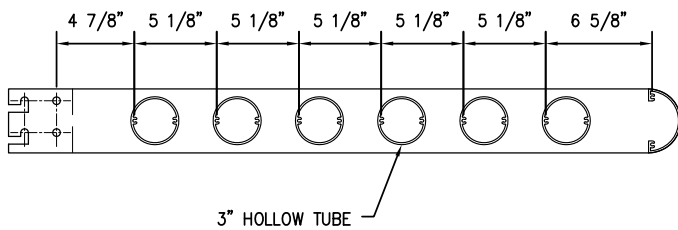
4" FASCIA - HALF ROUND
SCF20304



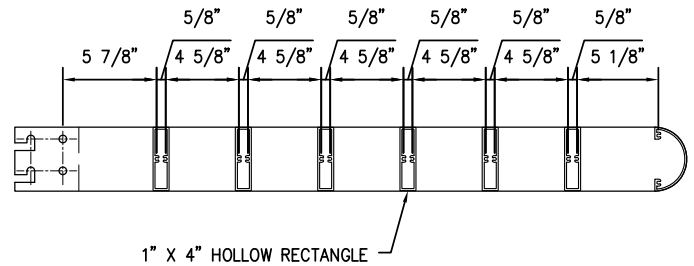
42" X 4" HALF ROUND OUTRIGGER WITH 4" HOLLOW BLADE INFILL
SCHA2514224-42



42" X 4" HALF ROUND OUTRIGGER WITH 2" HOLLOW TUBE INFILL
SCHA2202224-42



42" X 4" HALF ROUND OUTRIGGER WITH 3" HOLLOW TUBE INFILL
SCHA2203224-42



42" X 4" HALF ROUND OUTRIGGER WITH 1" X 4" HOLLOW RECTANGLE INFILL
SCHA2314224-42

API recommends that this note appear with storefront elevations and section view details in your blueprints.

Storefront and related materials provided by American Products, Inc. (API). No substitutions without written consent from store owner/Architect. API (813) 925-0144

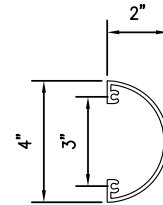
Customer: API	
Assembly: SUN CONTROL - 42" X 4" HALF ROUND	
Drawn By: GB	Date: 05/31/13
Revision:	Date:
Scale: N.T.S	Sheet: 3 of 10



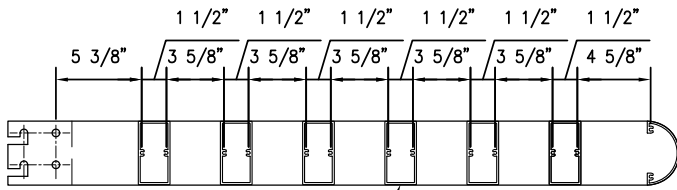
AMERICAN PRODUCTS, INC. (API)
12157 W. LINEBAUGH AVENUE #335
TAMPA, FL 33626
CONTACT: KERRI BEALS
PH (813) 925-0144
WWW.AMERICANPROD.COM



42" X 4" HALF ROUND OUTRIGGER
SCO20004-42

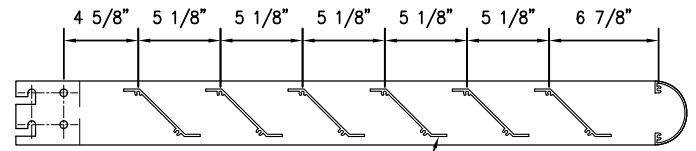


4" FASCIA - HALF ROUND
SCF20304



2" X 4" HOLLOW RECTANGLE

42" X 4" HALF ROUND OUTRIGGER WITH 2" X 4" HOLLOW RECTANGLE INFILL
SCHA2324224-42



3" Z-BLADE

42" X 4" HALF ROUND OUTRIGGER WITH 3" Z-BLADE INFILL
SCHA2653224-42

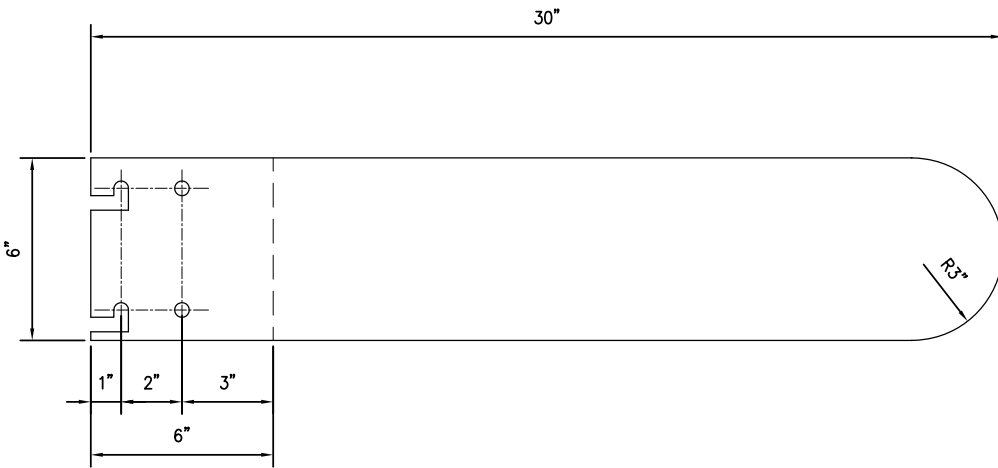
API Recommends that this note appear with storefront elevations and section view details in your blueprints.

Storefront and related materials provided by American Products, Inc. (API). No substitutions without written consent from store owner/Architect. API (813) 925-0144

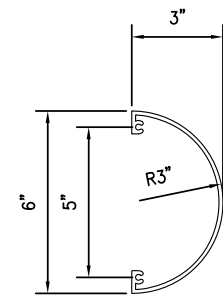
Customer: API	
Assembly: SUN CONTROL - 42" x 4" HALF ROUND	
Drawn By: GB	Date: 05/31/13
Revision:	Date:
Scale: N.T.S	Sheet: 4 of 10



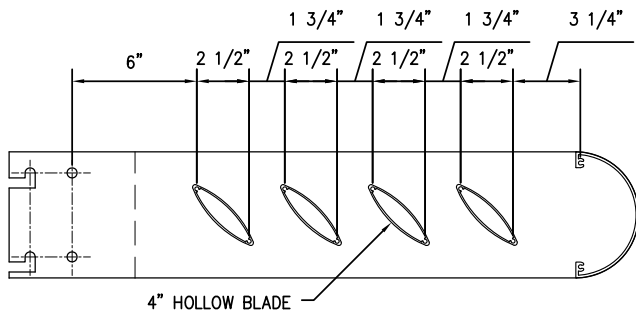
AMERICAN PRODUCTS, INC. (API)
12157 W. LINEBAUGH AVENUE #335
TAMPA, FL 33626
CONTACT: KERRI BEALS
PH (813) 925-0144
WWW.AMERICANPROD.COM



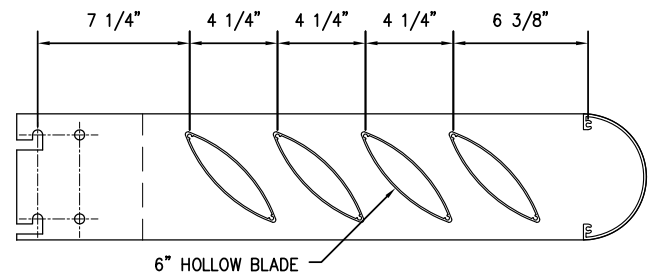
30" x 6" HALF ROUND OUTRIGGER
SCO20006-30



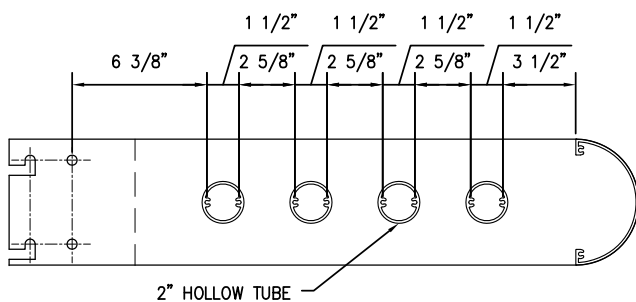
6" FASCIA - HALF ROUND
SCF20306



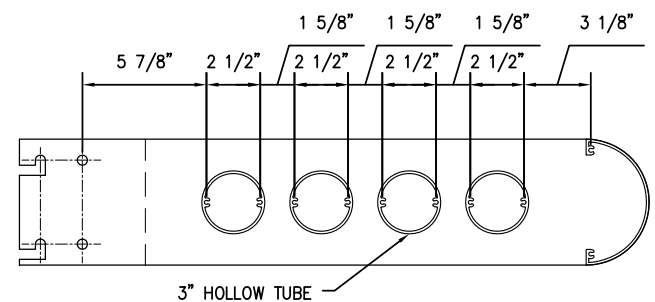
30" x 6" HALF ROUND OUTRIGGER WITH 4" HOLLOW BLADE INFILL
SCHA2514236-30



30" x 6" HALF ROUND OUTRIGGER WITH 6" HOLLOW BLADE INFILL
SCHA2526236-30



30" x 6" HALF ROUND OUTRIGGER WITH 2" HOLLOW TUBE INFILL
SCHA2202236-30



30" x 6" HALF ROUND OUTRIGGER WITH 3" HOLLOW TUBE INFILL
SCHA2203236-30

API Recommends that this note appear with storefront elevations and section view details in your blueprints.

Storefront and related materials provided by American Products, Inc. (API). No substitutions without written consent from store owner/Architect. API (813) 925-0144

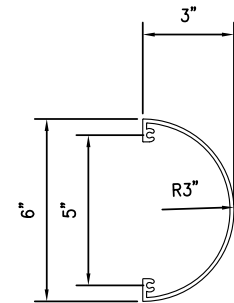
Customer: API	
Assembly: SUN CONTROL - 30" x 6" HALF ROUND	
Drawn By: GB	Date: 05/31/13
Revision:	Date:
Scale: N.T.S	Sheet: 5 of 10



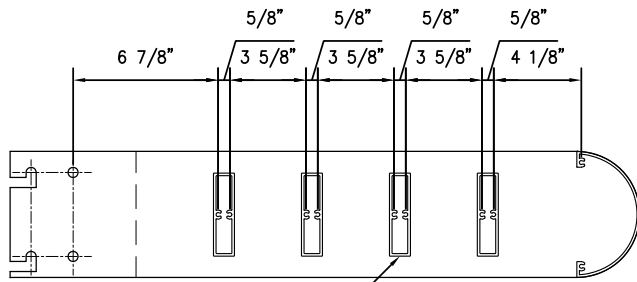
AMERICAN PRODUCTS, INC. (API)
12157 W. LINEBAUGH AVENUE #335
TAMPA, FL 33626
CONTACT: KERRI BEALS
PH (813) 925-0144
WWW.AMERICANPROD.COM



30" x 6" HALF ROUND OUTRIGGER
SCO20006-30

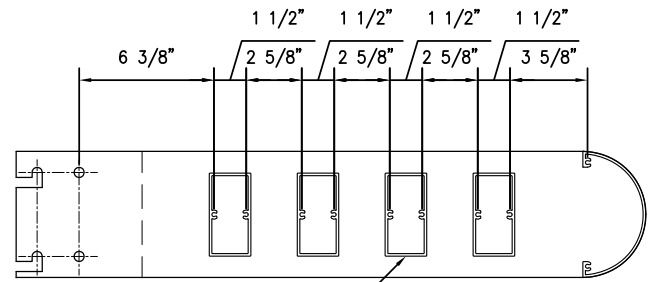


6" FASCIA - HALF ROUND
SCF20306



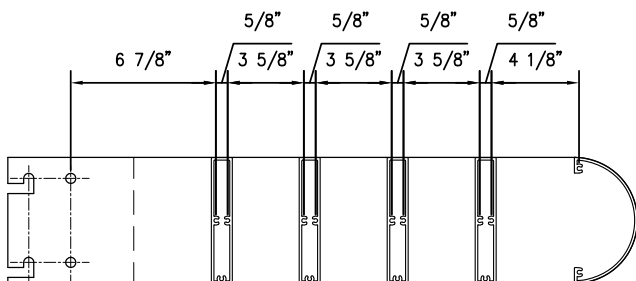
1" X 4" HOLLOW RECTANGLE

30" x 6" HALF ROUND OUTRIGGER WITH 1" X 4" HOLLOW RECTANGLE INFILL
SCHA2314236-30



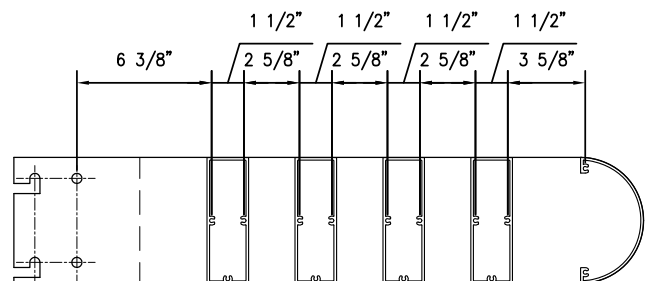
2" X 4" HOLLOW RECTANGLE

30" x 6" HALF ROUND OUTRIGGER WITH 2" X 4" HOLLOW RECTANGLE INFILL
SCHA2324236-30



1" X 6" HOLLOW RECTANGLE

30" x 6" HALF ROUND OUTRIGGER WITH 1" X 6" HOLLOW RECTANGLE INFILL
SCHA2316236-30



2" X 6" HOLLOW RECTANGLE

30" x 6" HALF ROUND OUTRIGGER WITH 2" X 6" HOLLOW RECTANGLE INFILL
SCHA2326236-30

API Recommends that this note appear with storefront elevations and section view details in your blueprints.

Storefront and related materials provided by American Products, Inc. (API). No substitutions without written consent from store owner/Architect. API (813) 925-0144

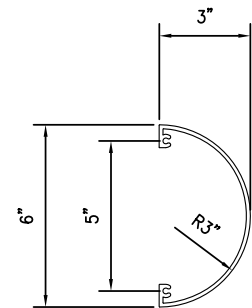
Customer: API	
Assembly: SUN CONTROL - 30" x 6" HALF ROUND	
Drawn By: GB	Date: 05/31/13
Revision:	Date:
Scale: N.T.S	Sheet: 6 of 10



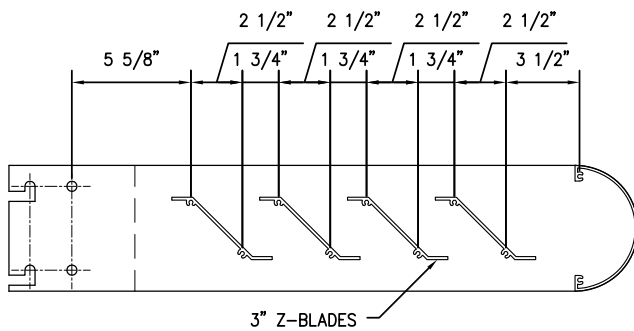
AMERICAN PRODUCTS, INC. (API)
12157 W. LINEBAUGH AVENUE #335
TAMPA, FL 33626
CONTACT: KERRI BEALS
PH (813) 925-0144
WWW.AMERICANPROD.COM



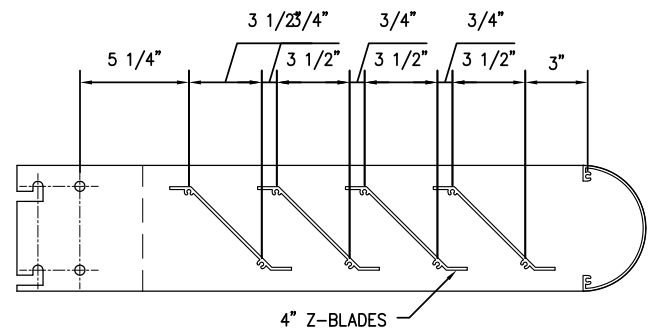
30" x 6" HALF ROUND OUTRIGGER
SCO20006-30



6" FASCIA - HALF ROUND
SCF20306



30" x 6" HALF ROUND OUTRIGGER WITH 3" Z-BLADE INFILL
SCHA2653236-30



30" x 6" HALF ROUND OUTRIGGER WITH 4" Z-BLADE INFILL
SCHA2664236-30

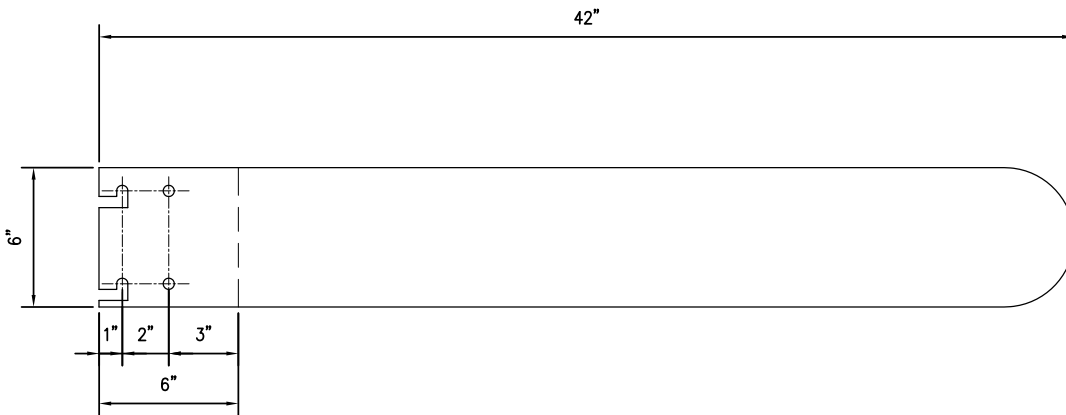
API Recommends that this note appear with storefront elevations and section view details in your blueprints.

Storefront and related materials provided by American Products, Inc. (API). No substitutions without written consent from store owner/Architect. API (813) 925-0144

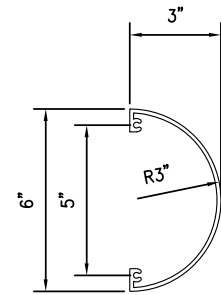
Customer: API	
Assembly: SUN CONTROL - 30" x 6" HALF ROUND	
Drawn By: GB	Date: 05/31/13
Revision:	Date:
Scale: N.T.S	Sheet: 7 of 10



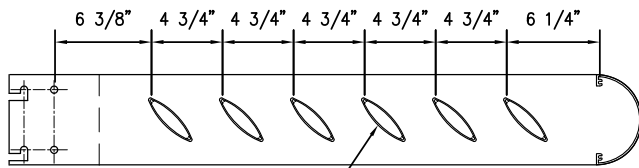
AMERICAN PRODUCTS, INC. (API)
12157 W. LINEBAUGH AVENUE #335
TAMPA, FL 33626
CONTACT: KERRI BEALS
PH (813) 925-0144
WWW.AMERICANPROD.COM



42" x 6" HALF ROUND OUTRIGGER
SCO20006-42

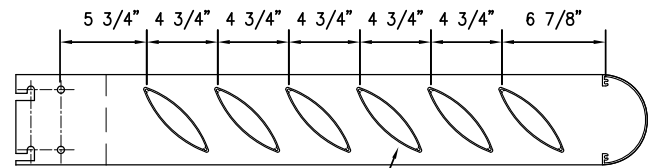


6" FASCIA - HALF ROUND
SCF20306



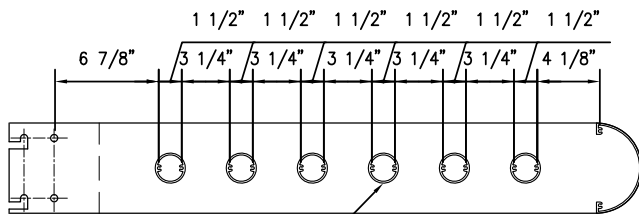
4" HOLLOW BLADE

42" x 6" HALF ROUND OUTRIGGER WITH 4" HOLLOW BLADE INFILL
SCHA2514236-42



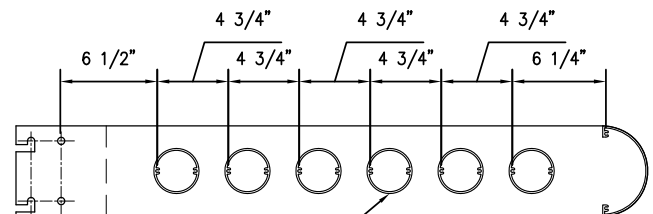
6" HOLLOW BLADE

42" x 6" HALF ROUND OUTRIGGER WITH 6" HOLLOW BLADE INFILL
SCHA2526236-42



2" HOLLOW TUBE

42" x 6" HALF ROUND OUTRIGGER WITH 2" HOLLOW TUBE INFILL
SCHA2202236-42



3" HOLLOW TUBE

42" x 6" HALF ROUND OUTRIGGER WITH 3" HOLLOW TUBE INFILL
SCHA2203236-42

API Recommends that this note appear with storefront elevations and section view details in your blueprints.

Storefront and related materials provided by American Products, Inc. (API). No substitutions without written consent from store owner/Architect. API (813) 925-0144

Customer: API

Assembly: SUN CONTROL - 42" x 6" HALF ROUND

Drawn By: GB

Date: 05/31/13

Revision:

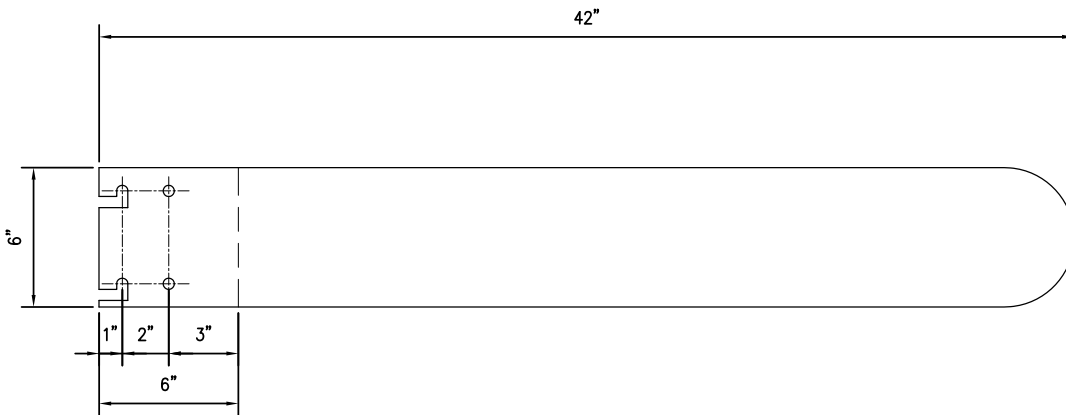
Date:

Scale: N.T.S

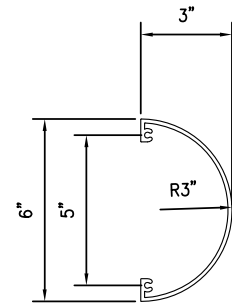
Sheet: 8 of 10



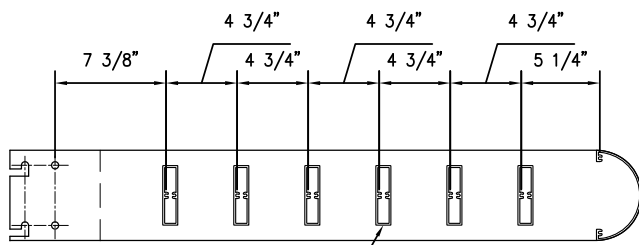
AMERICAN PRODUCTS, INC. (API)
12157 W. LINEBAUGH AVENUE #335
TAMPA, FL 33626
CONTACT: KERRI BEALS
PH (813) 925-0144
WWW.AMERICANPROD.COM



42" x 6" HALF ROUND OUTRIGGER
SCO20006-42

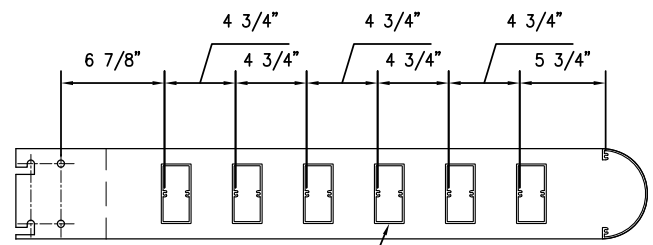


6" FASCIA - HALF ROUND
SCF20306



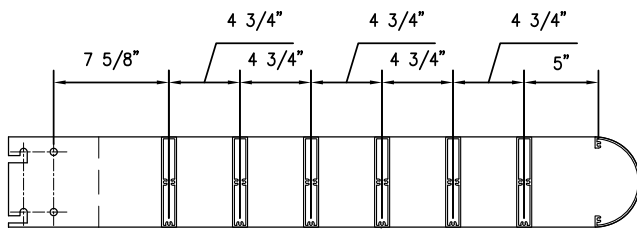
1" X 4" HOLLOW RECTANGLE

42" x 6" HALF ROUND OUTRIGGER WITH 1" X 4" HOLLOW RECTANGLE INFILL
SCHA2314236-42



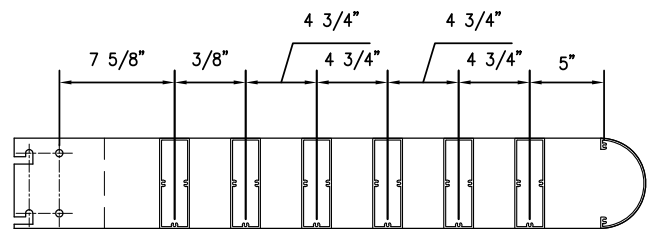
2" X 4" HOLLOW RECTANGLE

42" x 6" HALF ROUND OUTRIGGER WITH 2" X 4" HOLLOW RECTANGLE INFILL
SCHA2324236-42



1" X 6" HOLLOW RECTANGLE

42" x 6" HALF ROUND OUTRIGGER WITH 1" X 6" HOLLOW RECTANGLE INFILL
SCHA2316236-42



2" X 6" HOLLOW RECTANGLE

42" x 6" HALF ROUND OUTRIGGER WITH 2" X 6" HOLLOW RECTANGLE INFILL
SCHA2326236-42

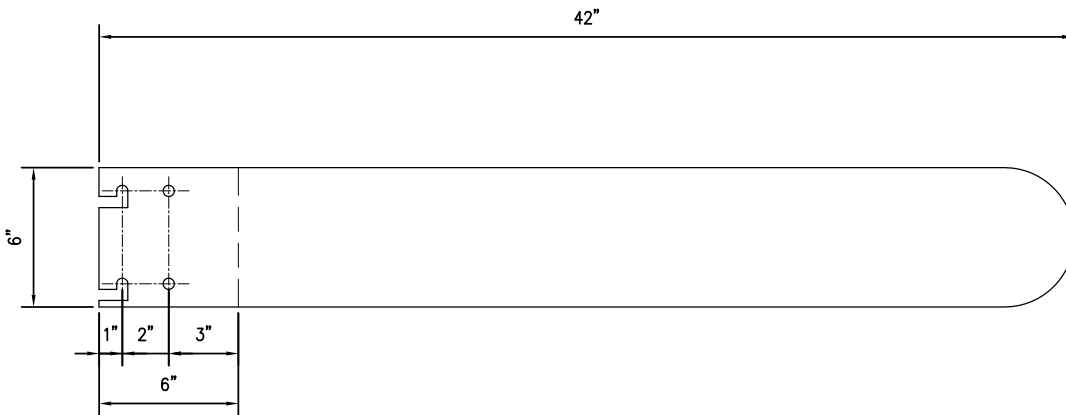
API Recommends that this note appear with storefront elevations and section view details in your blueprints.

Storefront and related materials provided by American Products, Inc. (API). No substitutions without written consent from store owner/Architect. API (813) 925-0144

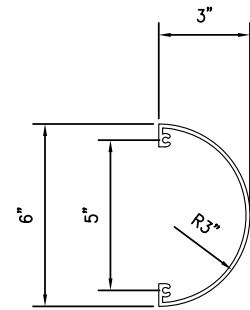
Customer: API	
Assembly: SUN CONTROL - 42" x 6" HALF ROUND	
Drawn By: GB	Date: 05/31/13
Revision:	Date:
Scale: N.T.S	Sheet: 9 of 10



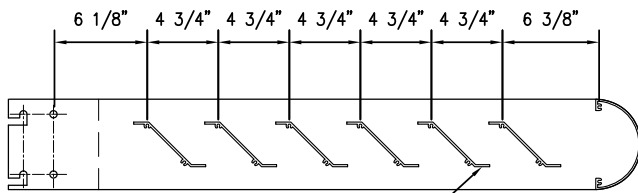
AMERICAN PRODUCTS, INC. (API)
12157 W. LINEBAUGH AVENUE #335
TAMPA, FL 33626
CONTACT: KERRI BEALS
PH (813) 925-0144
WWW.AMERICANPROD.COM



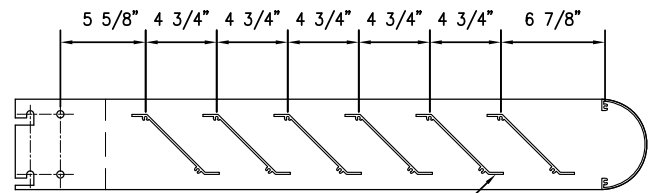
42" x 6" HALF ROUND OUTRIGGER
SCO20006-42



6" FASCIA - HALF ROUND
SCF20306



3" Z-BLADES
42" x 6" HALF ROUND OUTRIGGER WITH 3" Z-BLADE INFILL
SCHA2653236-42



4" Z-BLADES
42" x 6" HALF ROUND OUTRIGGER WITH 4" Z-BLADE INFILL
SCHA2664236-42

API Recommends that this note appear with storefront elevations and section view details in your blueprints.

Storefront and related materials provided by American Products, Inc. (API). No substitutions without written consent from store owner/ Architect. API (813) 925-0144

Customer: API	
Assembly: SUN CONTROL - 42" x 6" HALF ROUND	
Drawn By: GB	Date: 05/31/13
Revision:	Date:
Scale: N.T.S	Sheet: 10 of 10



AMERICAN PRODUCTS, INC. (API)
12157 W. LINEBAUGH AVENUE #335
TAMPA, FL 33626
CONTACT: KERRI BEALS
PH (813) 925-0144
WWW.AMERICANPROD.COM